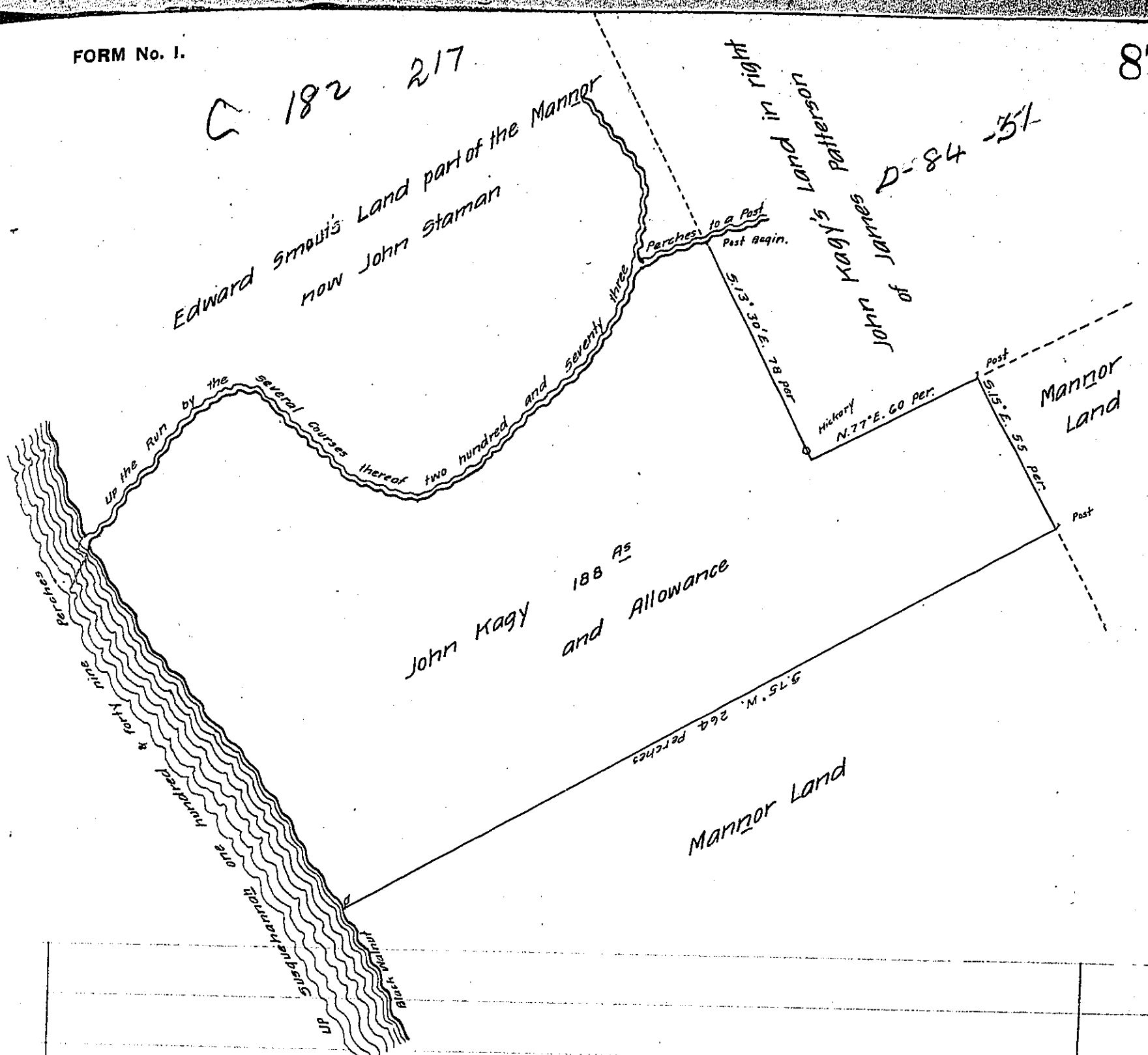


C 182 217



A Draught of a Tract of Land Situate in Manor Township
 Lancaster County part of Conestogo Manor. Containing one hundred and eighty
 eight Acres and the Allowance of six Acres p. Cent for Roads and High-
 ways, surveyed the 26th day of May 1757 for John Kagy

p- Geo. Stevenson

IN TESTIMONY that the above is a copy of the original remaining on file in
 the Department of Internal Affairs of Pennsylvania, made
 conformably to an Act of Assembly approved the 16th day of
 February, 1833, I have hereunto set my Hand and caused
 the Seal of said Department to be affixed at Harrisburg,
 this twenty-sixth day of May 1905

Loach R. Brown
 Secretary of Internal Affairs.